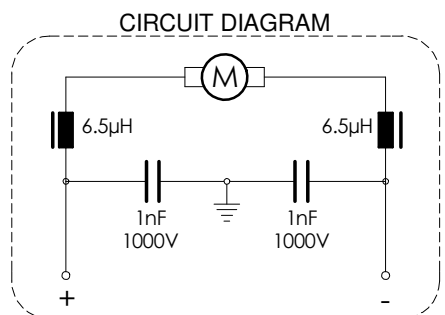
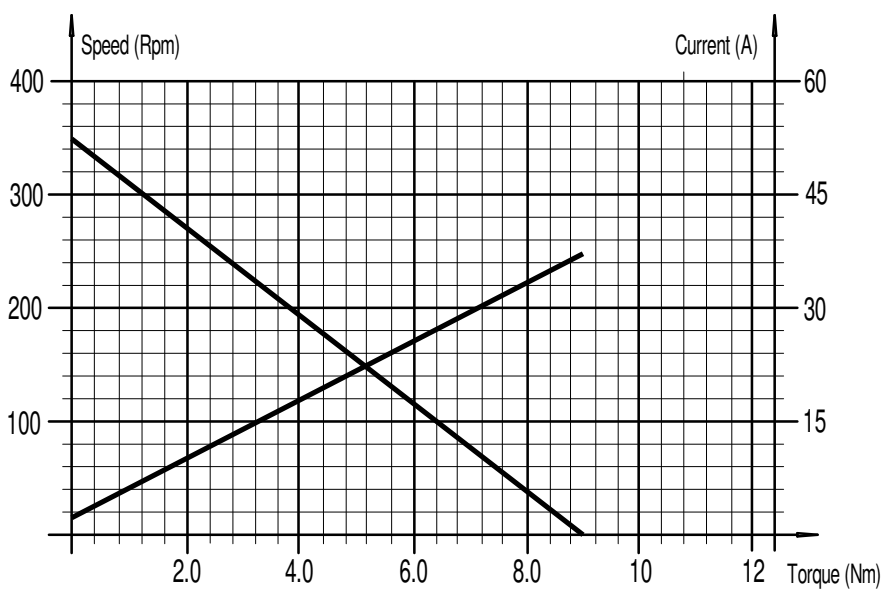
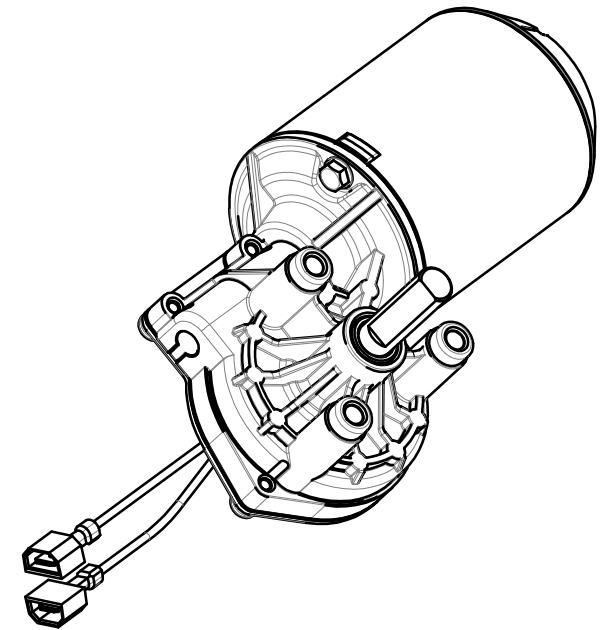
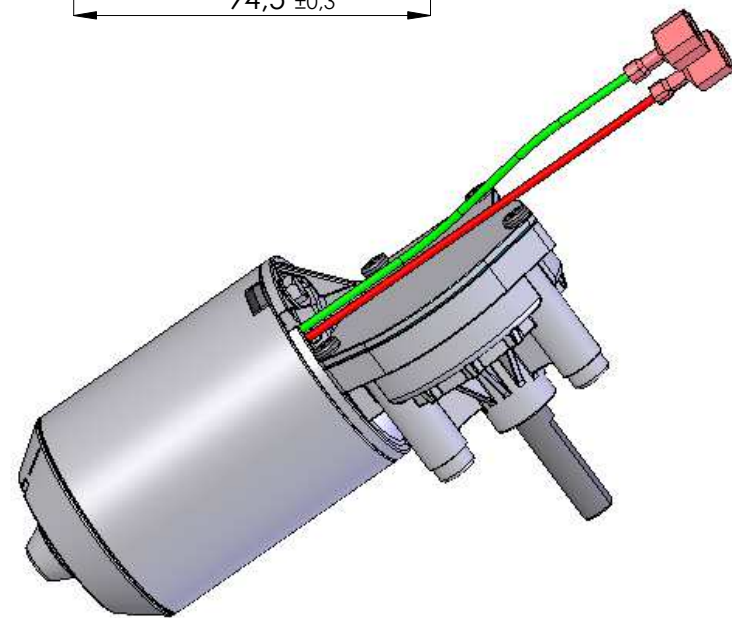
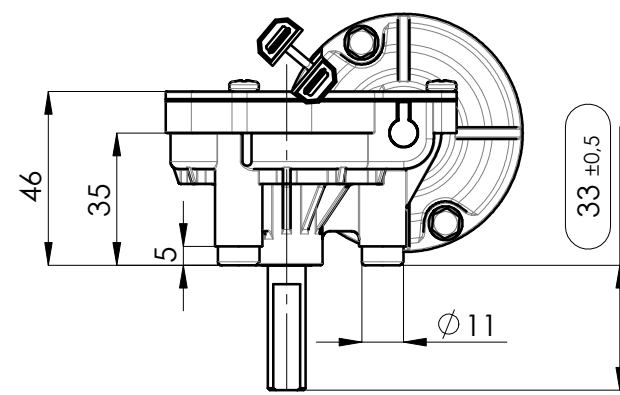
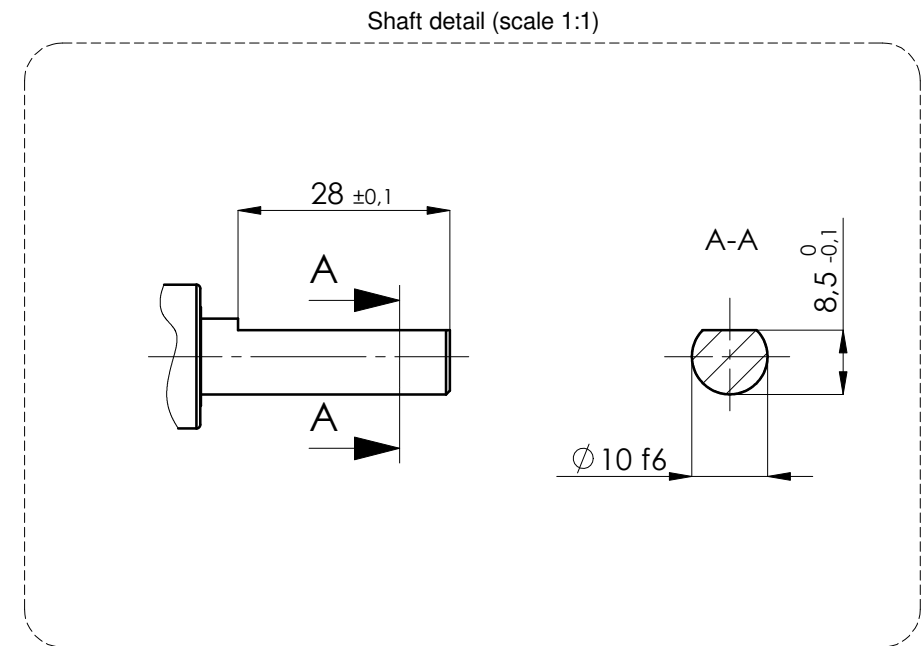
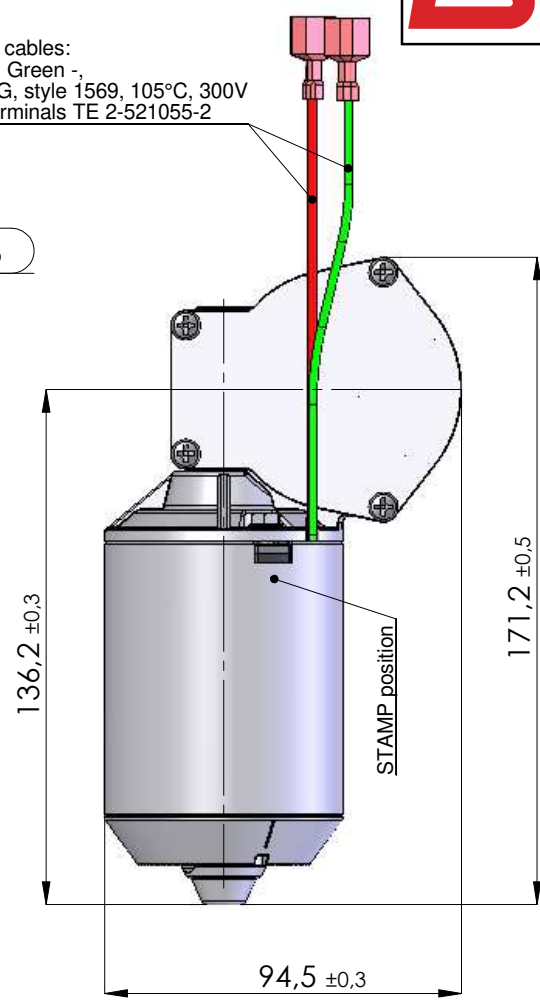


Power cables:
Red +, Green -,
18AWG, style 1569, 105°C, 300V
with terminals TE 2-521055-2



STAMP

SEEFRID week xxyy
Code 636.507 12VDC 350RPM

xx: year production
yy: week production

R.d.M.	DATE	INDEX	MODIFICATION DESCRIPTION
-	-	-	-
NOMINAL TENSION (V)		NO LOAD CURRENT (A)	SPEED (Rpm)
12		2.5 max.	350
NOMINAL TORQUE (Nm)		STARTING TORQUE (Nm)	NOMINAL POWER (W)
-		9.0	-
GENERAL TOLERANCES: ISO 22768-mk			
PROTECTION CLASS: -			
WEIGHT: approx. 1.2Kg			
SCALE: 1:2			
These are average values when the motor is cold. Divergences of ±10% are possible in the series			
PROJ. : 0901	DATE: 24/12/2020	DRAWER :	CHECK:
			SIGN: